

ASPECTS UNSEEN

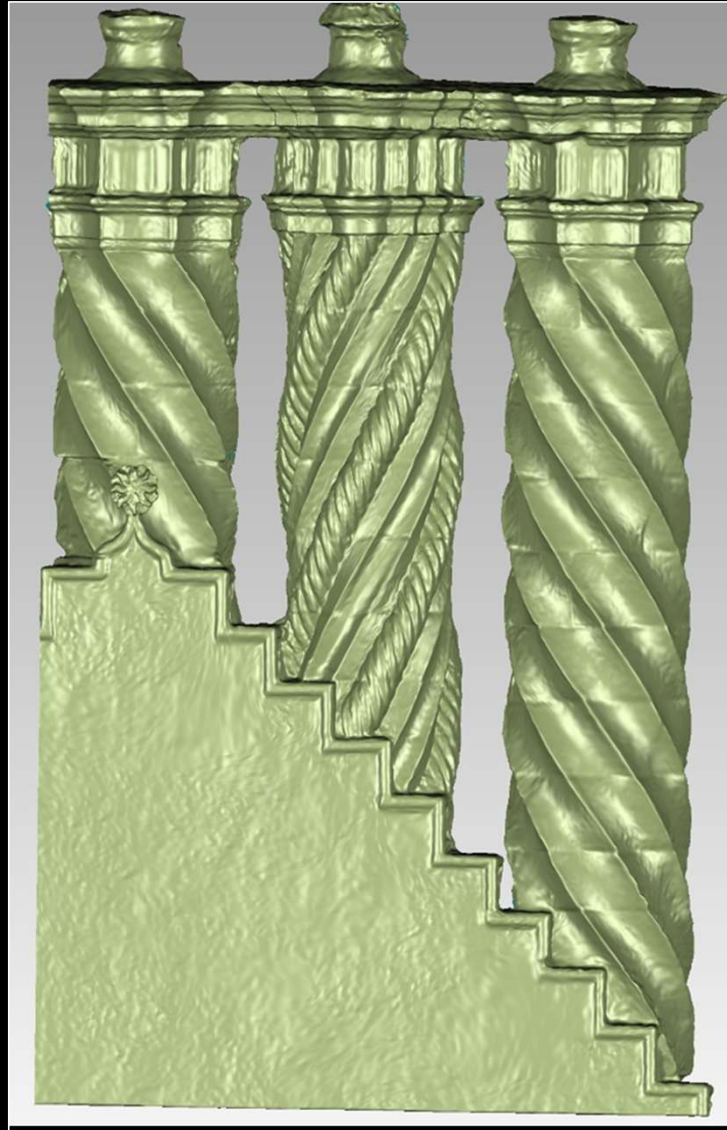
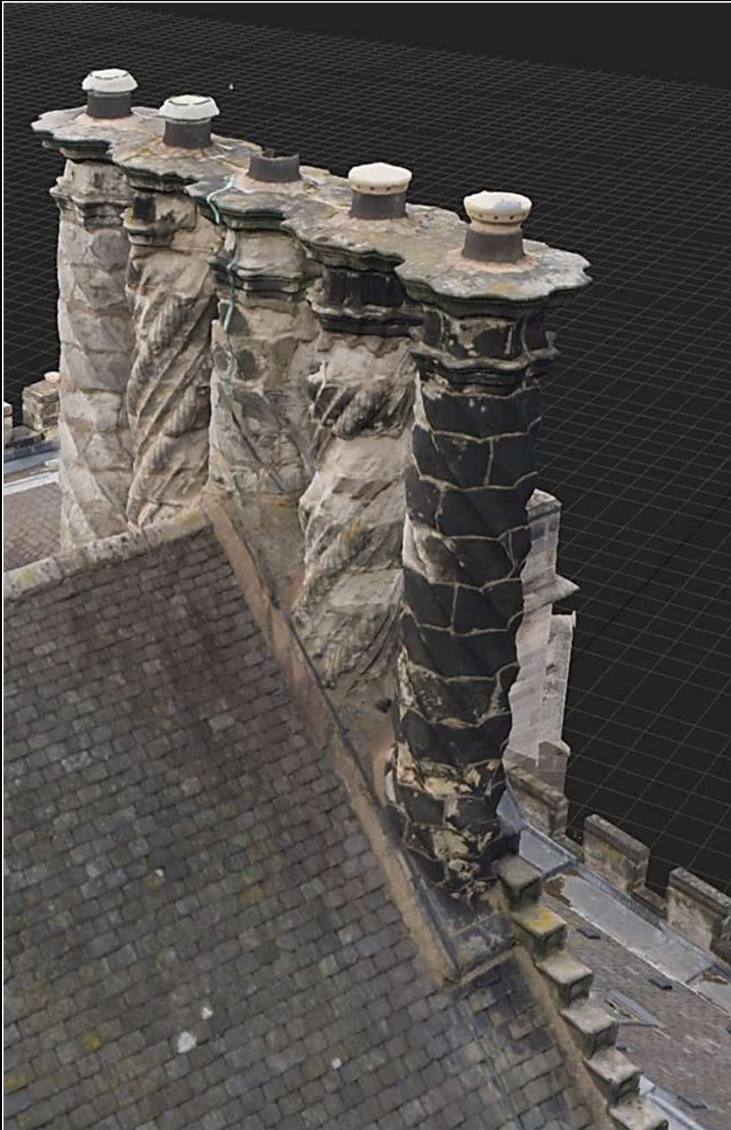
Winton Castle

Winton Castle in East Lothian is a Category A listed building that embodies Scotland's Renaissance heritage and centuries of Seton family history. It was once a seat of power where kings were entertained, craftsmen from Edinburgh Castle were employed, and even Bonnie Prince Charlie requisitioned it during the Jacobite rising. Today, it stands as both a private residence and an exclusive events venue, preserving its architectural grandeur and cultural legacy

We were commissioned to create an AU 3D Digital Model of the exterior of the castle and to scan certain historic rooms in the interior to provide a record for the castle's conservation. Plan. ●



A view of the AU 3D Digital Model of Winton Castle

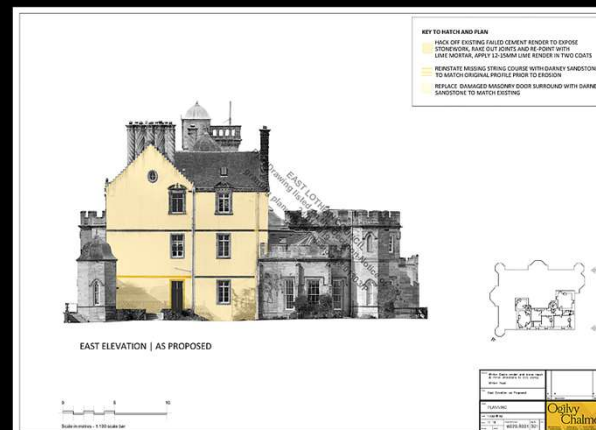
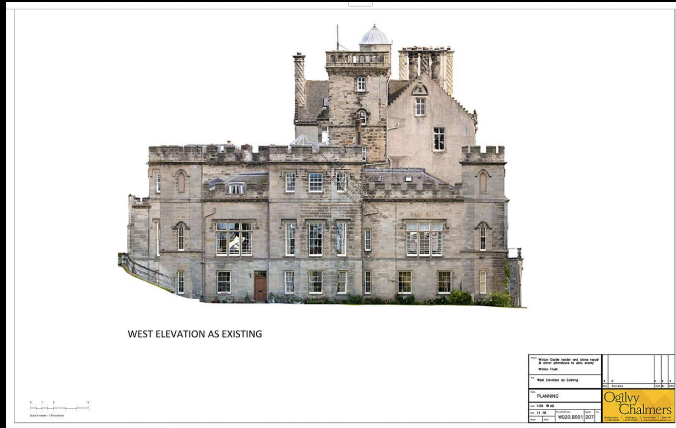


Winton's carved chimney stacks are particularly of note and are expensive to replace.

The image from part of the model shows a badly weathered stack. The 2nd image shows an untextured model of a stack of similarly carved chimneys which can be used by the stone carvers as a template for the restoration of the weathered stack.



The 4 orthoimage elevations of Winton Castle and the orthoimage roof plan. These were used by the Castle's architect to plan renovations to the fabric of the building.



A First for East Lothian Council

These orthoimage elevations were the first of their kind submitted to East Lothian Council. Once their accuracy and true-to-scale nature were demonstrated, the Council accepted them as a valid alternative to traditional line drawings — and has continued to approve our orthoimage submissions on subsequent applications.

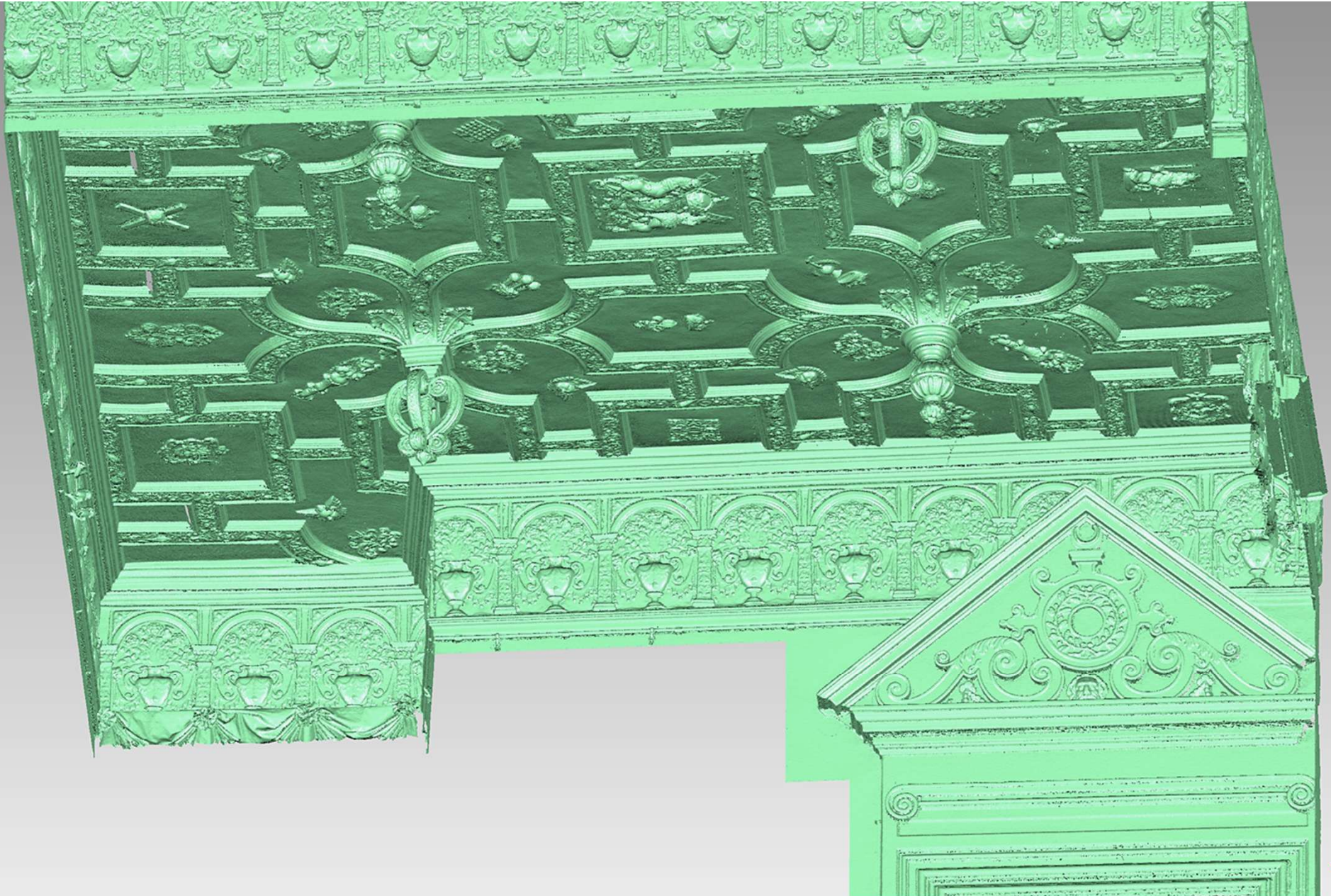


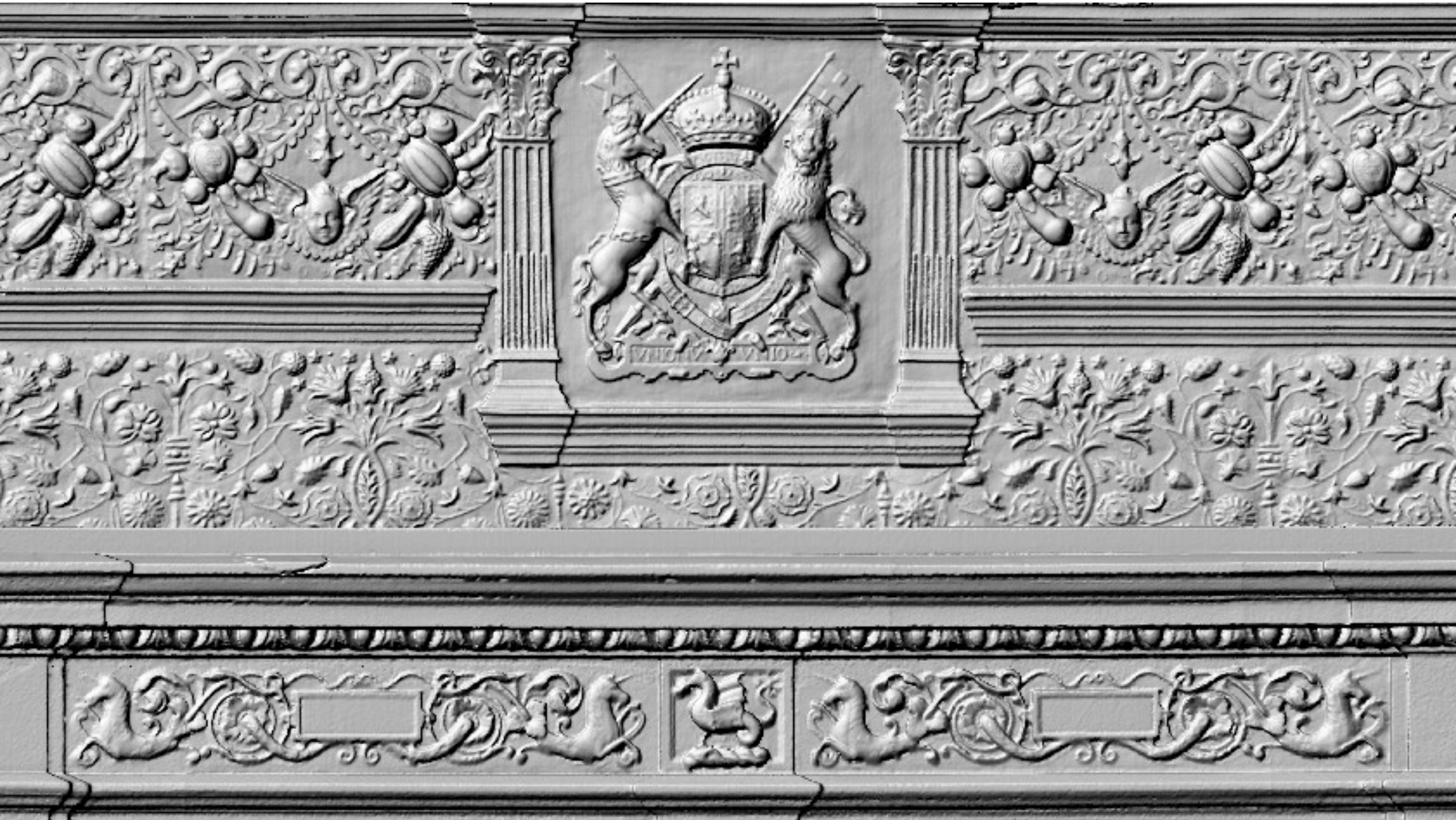


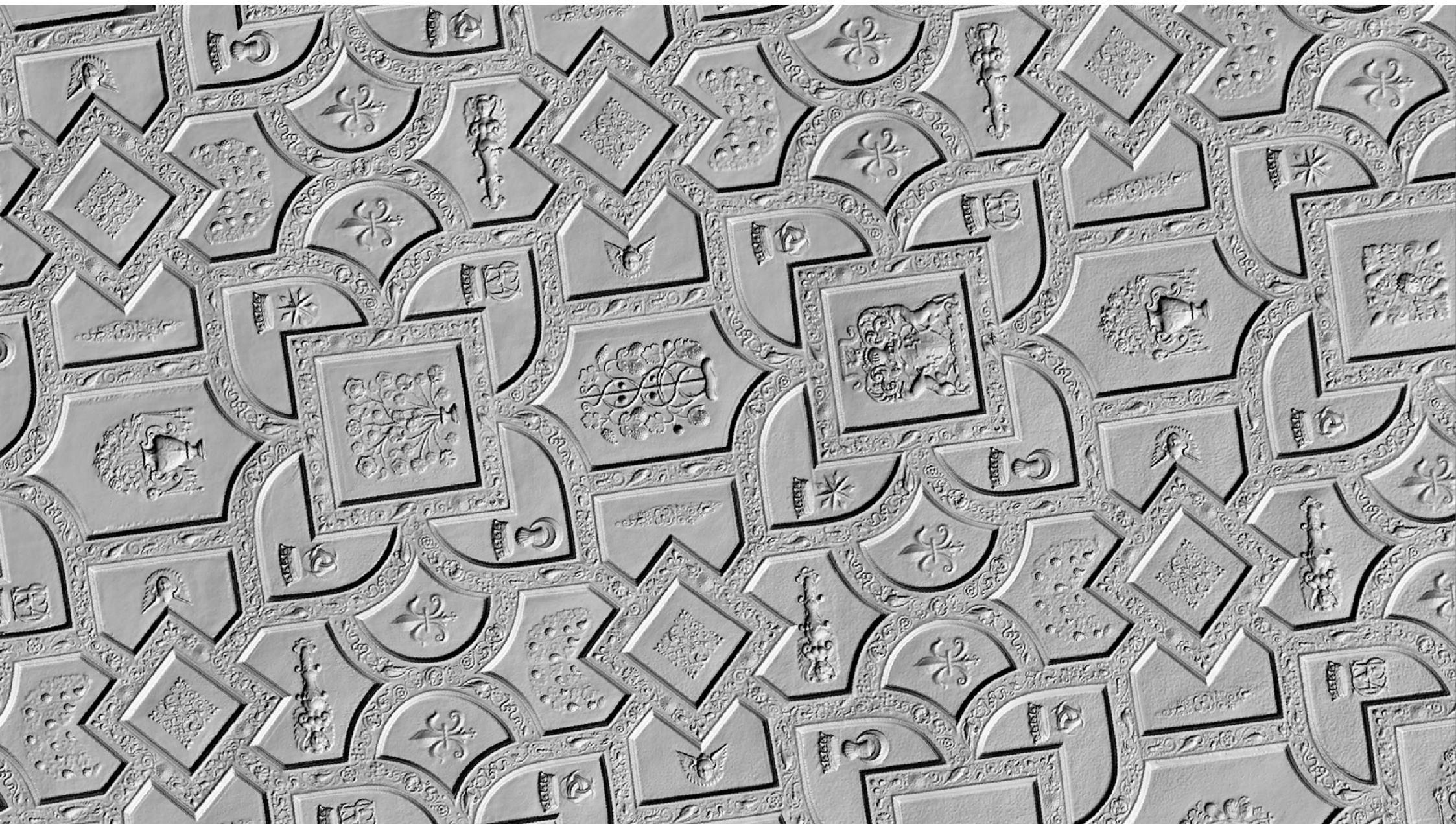
Winton Castle is famous for its plasterwork. It contains some of the most elaborate and ornate Renaissance plaster ceilings in Scotland, created by master craftsmen who had also worked on Edinburgh Castle. The ceilings are richly decorated with intricate designs, heraldic motifs, and Renaissance flourishes. They are considered among the most elaborate in Scotland, a hallmark of the castle's grandeur

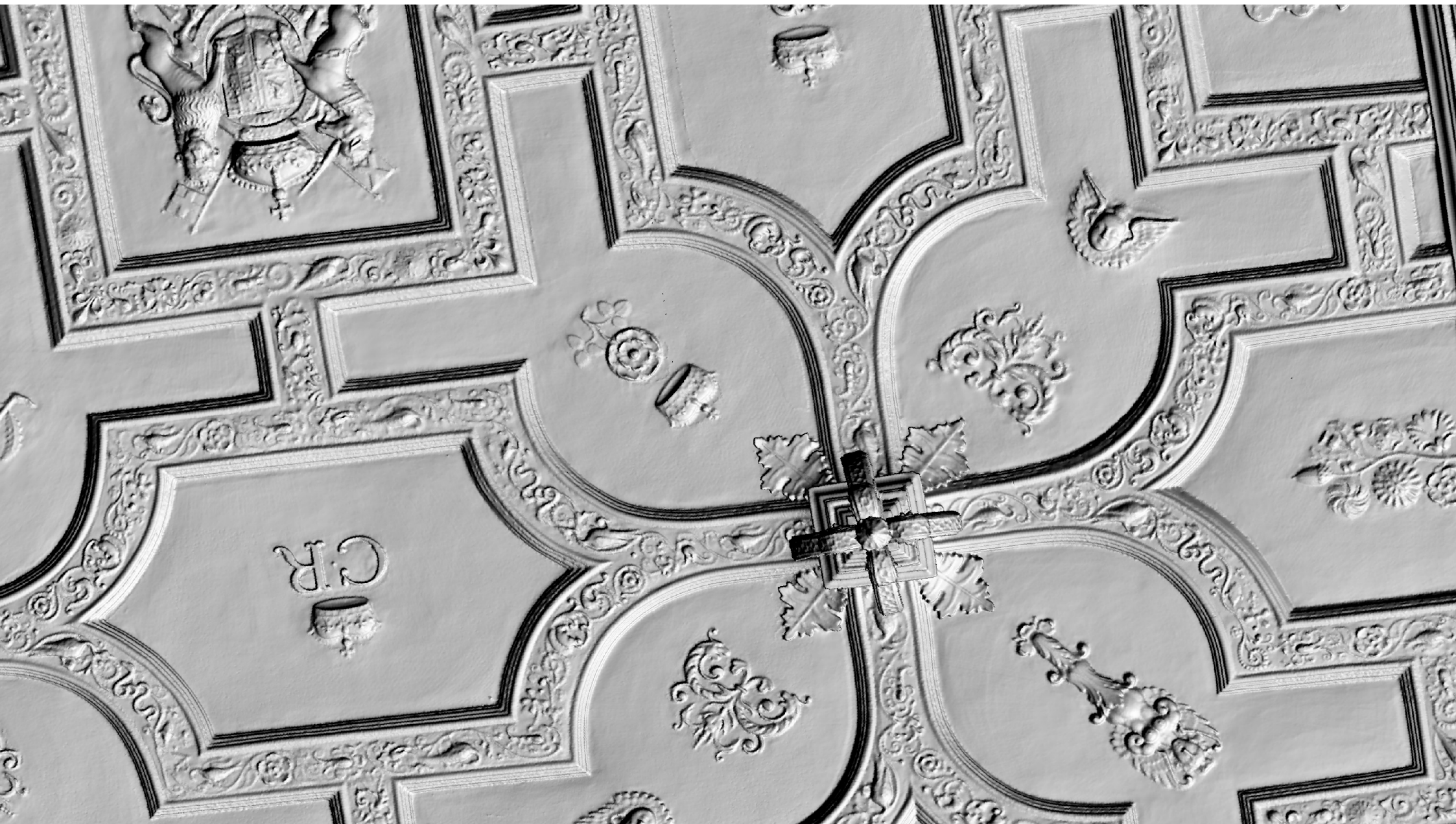
We scanned the ceilings and other plasterwork to create a detailed record. We were later asked to provide the data for one of the ceiling for designers to create a new carpet which was to be based on the design of the ceiling.

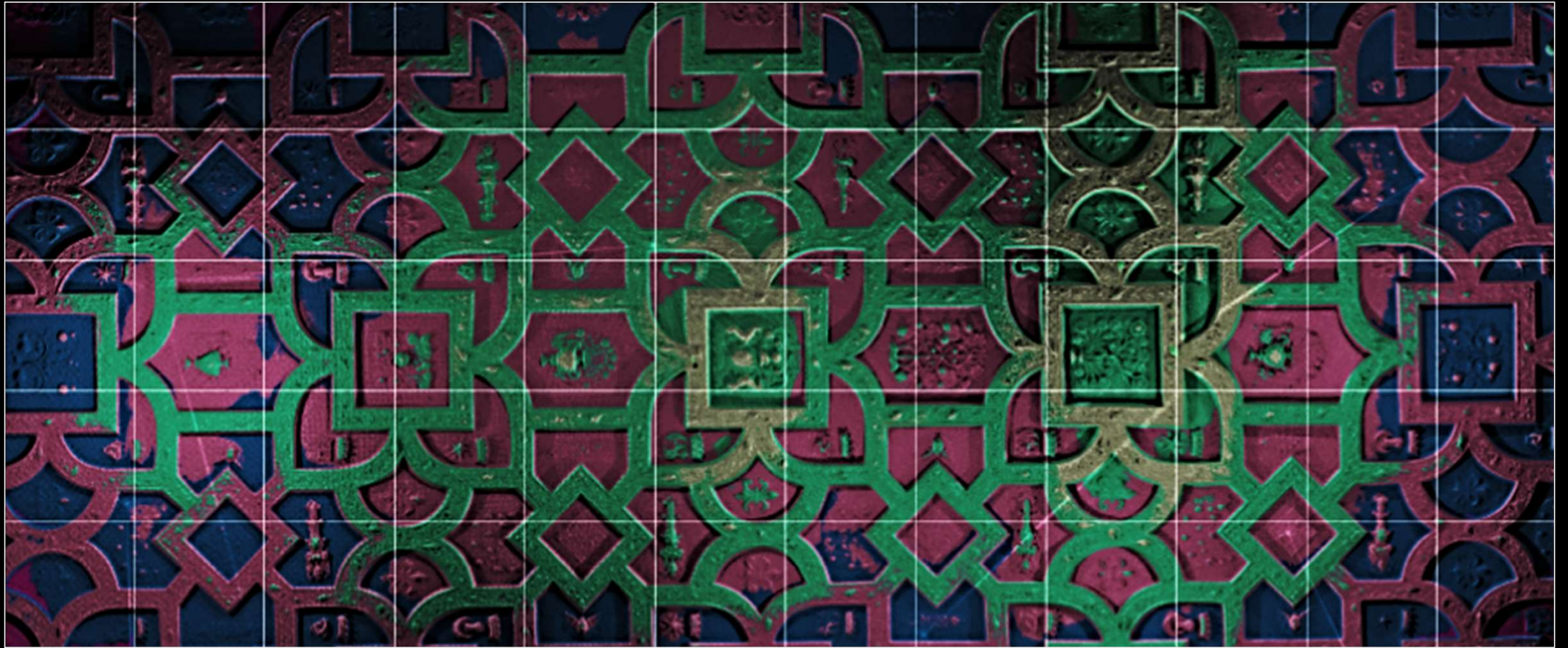
Examples of the scanning records are shown in the following slides.











This image illustrates the extent of deviation from a chosen plane indicating the complex plasterwork of this ceiling is sagging towards the centre of the room. The amount of the deviation at any point can be measured from the model.