

# ASPECTS UNSEEN

## St Mary's Kirk, Haddington

St Mary's Collegiate Church in Haddington, often called the "Lamp of Lothian," is the longest parish church in Scotland, begun in 1380 and built in the Gothic style. Despite being heavily damaged during the Siege of Haddington in 1548, it was restored over centuries and today stands as a remarkable example of medieval architecture and community resilience

St Mary's was scanned to provide a precise 3D record of the exterior and interior of the Church. The next step in the project is to create an AU 3D Digital Model by capturing terrestrial and drone photography to better reveal the scars of the 1548 Siege. These marks connect the building's fabric directly to its turbulent history.

Seeker Films are in negotiation to produce a film telling the Church's story.

Laser scan

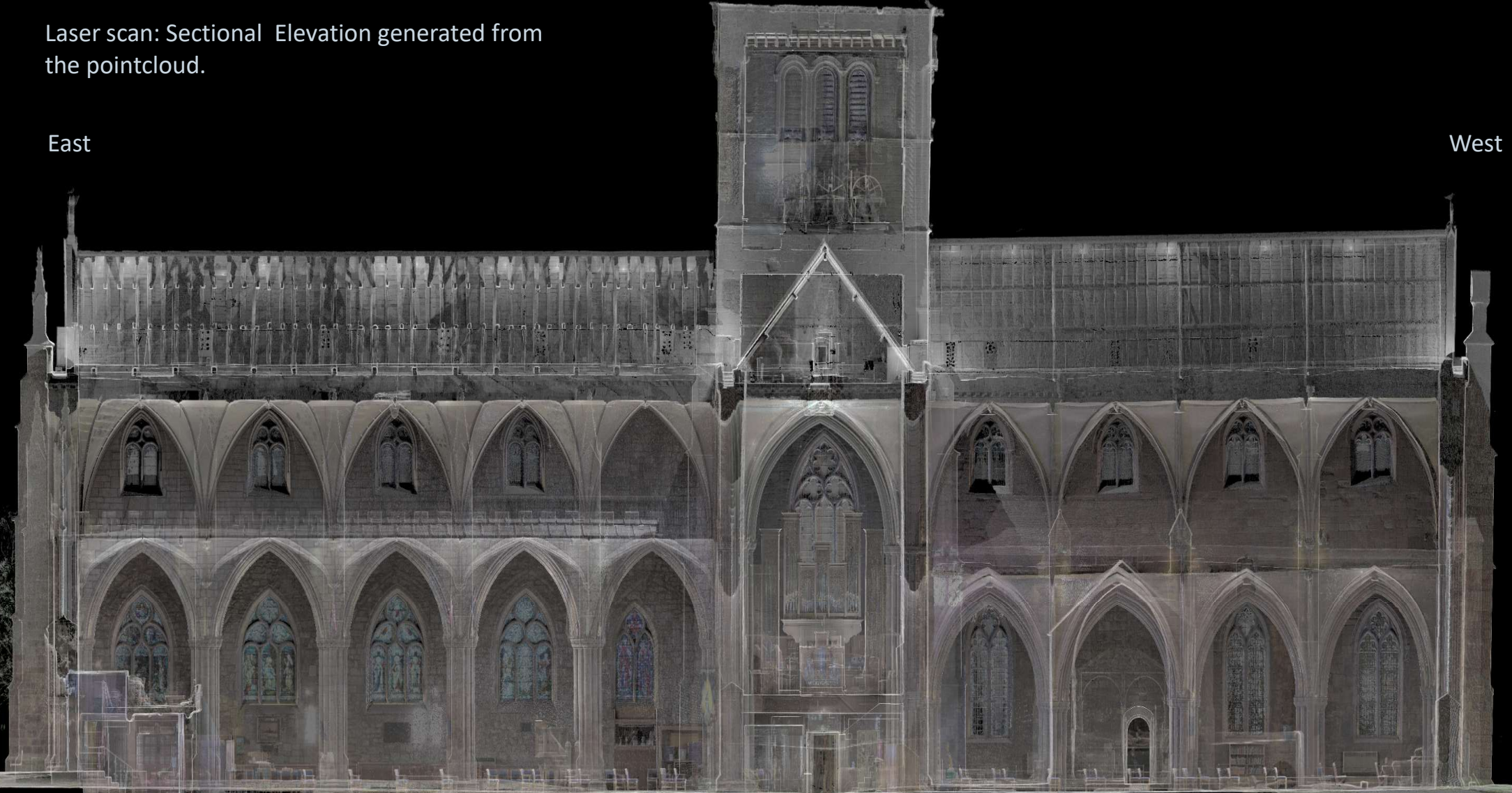
Colourised Laserscan Pointcloud



Laser scan: Sectional Elevation generated from the pointcloud.

East

West



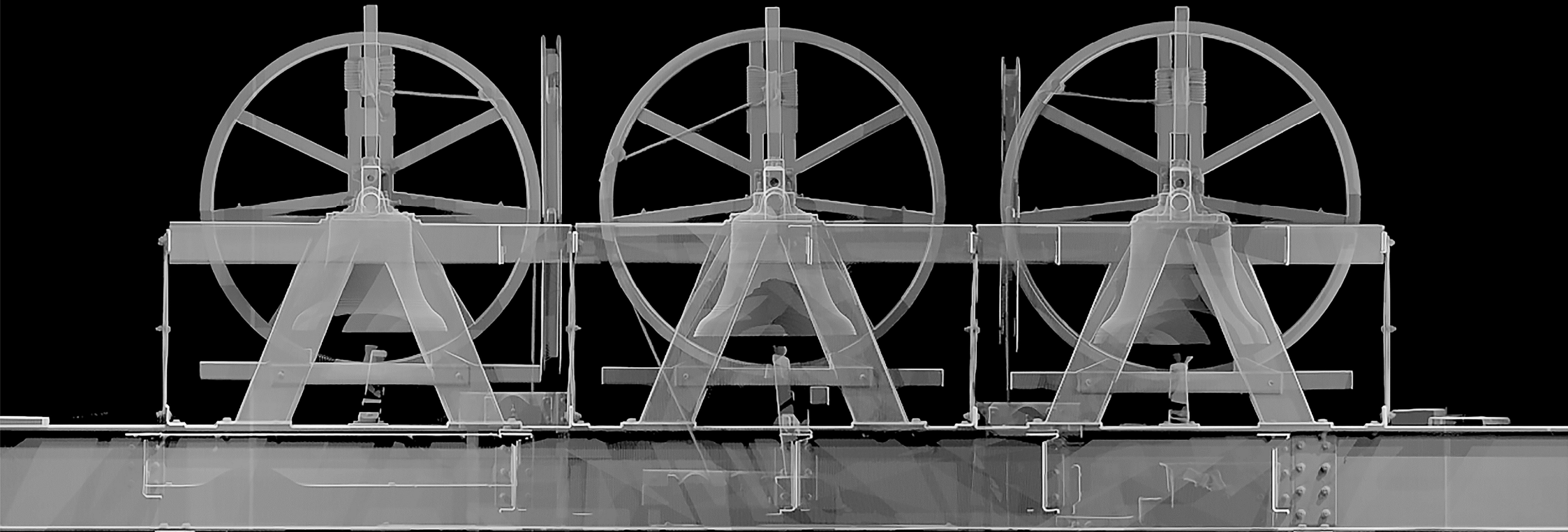
Laser scan



Sectional Elevation of the Crossing



Laser scan



The Ring of 8 Bells at St Mary's, Haddington - cast in 1911 to mark King George V's coronation, relocated from Dunecht House and installed in 1999, they replace the 'three guid bells' lost during the Siege of 1548. Their presence today embodies both continuity and resilience in the church's long history. They can be seen in the Sectional Elevation of the Crossing on the previous slide. A Ring of 8 Bells is rare in Scotland.

Graffiti thought to date from the Siege of Haddington in 1548. A horse, cart and rider revealed through slope analysis of the pointcloud for this location.

